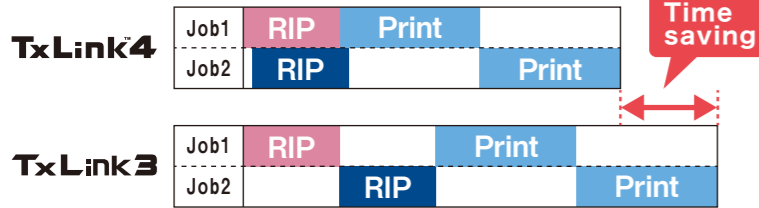
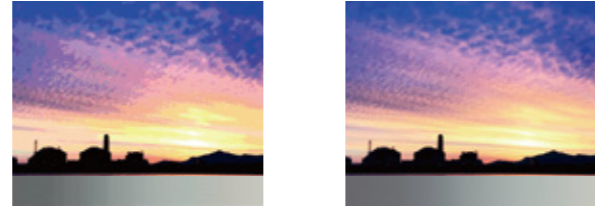


Parallel RIP function to improve production efficiency

The parallel RIP function is useful for multiple print job data. RIP processing of multiple jobs can be performed in parallel, resulting in a significant reduction in work time. Up to 8 jobs can be processed in parallel.



16-bit rendering achieves beautiful gradation expression



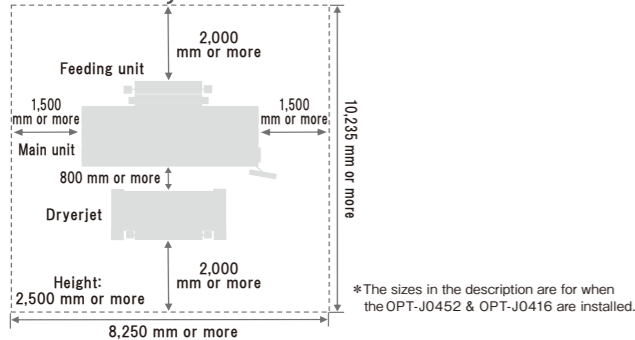
TxLink3 8-bit rendering TxLink4 16-bit rendering
8-bit rendering is used depending on the file format or color space.

Specifications

Item	Tiger-1800B MkIII Direct-to-textile model
Printhead	On demand piezo head
Printhead No. / Layout	16 printheads (8 x 2 staggered layout)
Droplet size	Min.4pl / Max. 12pl (Ink type : MLRc500)
Print resolution	600 dpi, 1,200 dpi
Max. printable width	1,850 mm (73 in)
Max. media width	1,900 mm (75 in)
Media core diameter	2 inch
Roll outer diameter ^(*)	φ400 mm (16 in) or less
Roll weight ^(*)	100 kg (221 lb) or less
Ink	Type/Color
	Capacity
	Color set
Interface	Ethernet 10GB-T / USB2.0
Operation	Touch panel method with the MPC (Mimaki Print Controller), a specialized software installed into the built-in PC.
Applied RIP software (Option)	TxLink4 Standard
Power ^(**)	Main unit
	Dryerjet
Certifications	Temperature
	Humidity
	Dust
Operational environment	Main unit
	Dryerjet
Powr consumption	Feeding unit
	Dryerjet
Outer dimensions (LxMxH)	Main unit
	Feeding unit
Weight	Main unit
	Dryerjet
	Feeding unit

*1 : It is the size/weight with the Feeding unit and the Dryerjet.
*2 : The Feeding unit power is supplied from the main unit.

Installation layout



● Some of samples in this catalog are artificial renderings. ● Specifications, design and dimensions stated in this catalog may be subject to change without notice for technical improvements etc. ● The corporate names and merchandise names written in this catalog are the trademark or registered trademark of the respective corporations. ● Inkjet printers print using extremely fine dots, so colors may very slightly vary after replacement of print heads. ● Also note that if using multiple printer units, colors could vary slightly from one unit to other (s) due to slight individual differences. ● The specifications described in this catalog are as of August 2021.

Mimaki MIMAKI ENGINEERING CO., LTD.
2182-3 Shigeno-Otsu, Tomi-city, Nagano 389-0512, Japan
TEL: +81-268-64-2281

Mimaki Global Network

USA	MIMAKI USA, INC.	Europe	MIMAKI EUROPE B.V.
Brazil	MIMAKI BRASIL COMERCIO E IMPORTACAO LTDA	Indonesia	PT. MIMAKI INDONESIA
India	MIMAKI INDIA PRIVATE LIMITED	Australia	MIMAKI AUSTRALIA PTY. LTD.
Taiwan	MIMAKI ENGINEERING (TAIWAN) CO.,LTD.	China	SHANGHAI MIMAKI TRADING CO.,LTD.
Singapore	MIMAKI SINGAPORE PTE. LTD.	Thailand	MIMAKI (THAILAND) CO.,LTD.

For
TEXTILES &
APPAREL

Belt-Type Direct-to-Textile Inkjet Printer High-Speed Model **Mimaki™**

Tiger-1800B MkIII

Direct-to-textile inkjet printer

Supplies

Item	Ink type	Color	Code	Discription
Reactive dye MLRc500 ECO PASSPORT Certified ink		Cyan	MLR50-C-BJ	10kg (22 lb) Ink tank
		Magenta	MLR50-M-BJ	
		Yellow	MLR50-Y-BJ	
		Black	MLR50-K-BJ	
		Red	MLR50-R-BJ	
		Orange	MLR50-Or-BJ	
		Blue	MLR50-BI-BJ	
Direct sublimation MLSb520 ECO PASSPORT Certified ink		Light Black	MLR50-Lk-BJ	10 kg bottle (For Reactive ink)
		Blue	MLS52-BI-BJ	
		Magenta	MLS52-M-BJ	
		Yellow	MLS52-Y-BJ	
		Black	MLS52-K-BJ	
Flushing Liquid		ML Cleaner	MLC01-Z-BJ	10 kg bottle (For Direct sublimation ink)
		Flusing Liquid 03	FL003-Z-BJ	

Options

Applicable model: Tiger-1800B MkIII for direct-to-textile print

Feeding unit (OPT-J0452)
Small feed unit for standard roll type fabric

Dryerjet (OPT-J0416)
Drying and winding unit for standard roll type fabric

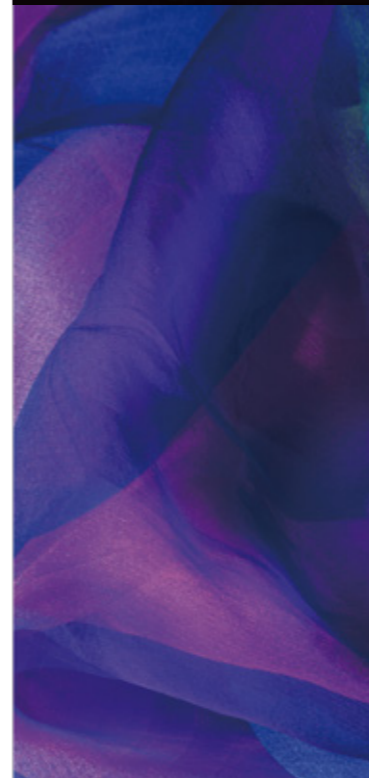
Small roll unit with centering (OPT-J0483)
This is a rolled media feeding device equipped with a centering unit and dancer bar

Big roll unwinder (OPT-J0485)
Jumbo roll feeding unit suitable to set a long fabric roll into the printer

Shaking unit with centering (OPT-J0487)
This allows the feeding of non-roll-type long fabric

Unitech dryer (OPT-J0491)
Suitable for thin materials likely to cause color migration and high-density printing

Shaking unit for exit (OPT-J0489)
Unit for collecting the fabric after printing in a folded state



Tiger-1800B MkIII

Having highly-stable performance and high print technology, "Tiger-1800B MkIII" is a direct-to-textile inkjet printer realizing high-level print quality and print speed.



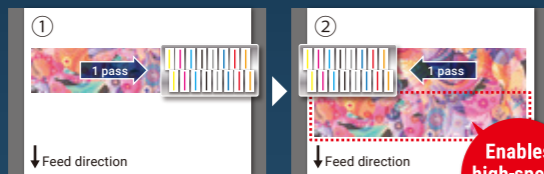
Max print resolution **1200 dpi** Max speed **385 sqm/h** (4,144 sq.ft/h)

» Selectable print mode

Print mode can be selectable in accordance with your job for high-speed print focusing on productivity and high-quality print pursuing beauty.

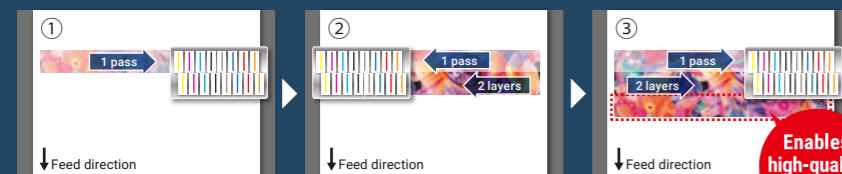
01. One pass mode

All printheads incorporated in the printer are used in one pass mode, thus allowing for one-time print width equivalent to two staggers.



Enables high-speed printout.

02. Multi pass mode



Enables high-quality printout.

-Rear row stagger of the printheads incorporated in the printer is used for printing.
-Front row stagger prints overlapping on the same place to finish the printing.
-The print speed becomes about half of that in one pass mode.

» Drop mode for optimal drop size to be selected in accordance with the printing data

Depending on ink type and printing mode, there are 4 different droplet sizes. Drop mode can be selected from the two types of high speed and standard modes to match the print data.

High speed (3 drops) mode

Ideal for fine design data such as thin lines and for light colors printing.



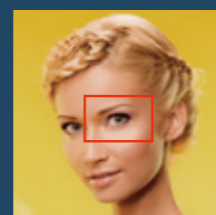
*Droplet size by MLRc500 Reactive ink

Standard (4 drops) mode

Ideal for printing where density is required such as monochromatic colors.



*Droplet size by MLRc500 Reactive ink



Drop mode

Combination of different size dots enables smooth color printing with less graininess.

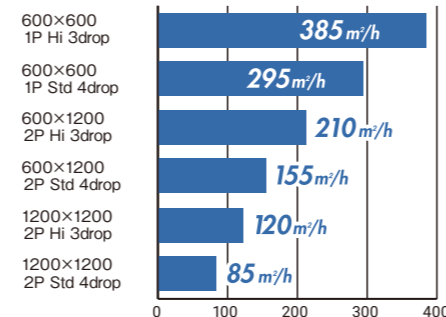
Fixed dot*1



*1 Fixed dot cannot be selected.

» Print speed

Bi-direction print



Condition of print speed: Print with MLRc500 ink
MAPS: Auto Auto Cleaning (Normal) every 30 min. Print width: 1,850 mm

The advanced functions of pursuit of high quality print and ease in operation

NEW! MPC

* MPC : Mimaki Printer Controller

New software of touch screen for easier operation, built-in PC in the main body, which automatically starts and instructs printer settings, operations, and output.



One touch selection



Status is indicated by icon

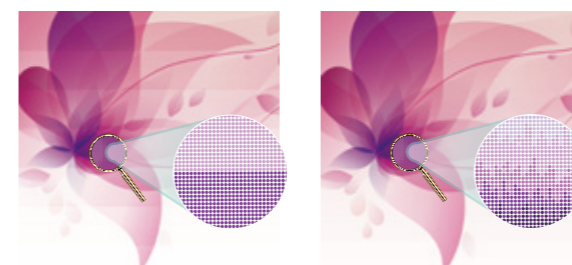


Easy check of remaining ink level

NEW! MAPS4

Banding and uneven color printing are reduced with blurred boundaries similar to graduation printing.

* MAPS4 : Mimaki Advanced Pass System 4



MAPS: OFF

MAPS: ON

NEW! Nozzle Recovery & Scanner for preventing downtime of nozzle clogging

- No need of direct service intervention
- Replaces clogged nozzles by open nozzles
- Makes printing possible even if nozzles are missing
- Increases the uptime

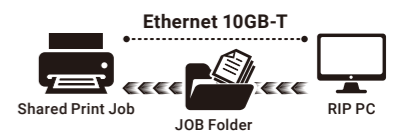
* The Nozzle Recovery is activated only at multi pass mode.



NEW! Ethernet 10GB-T

- For hyper print data transfer

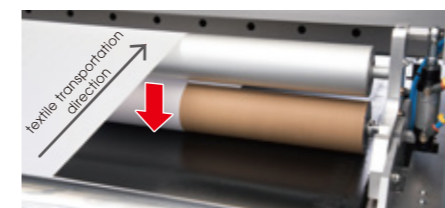
Please note the RIP PC needs to have 10 GB base ethernet controller too.



Reliable and Stable mechanism secures high-speed printing

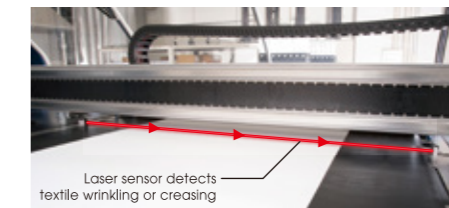
Twin pressure roller shafts

Textiles are uniformly applied without wrinkling onto the belt through the upper and lower rollers, assuring a stable quality during printing.



Wrinkle sensor

Detects textile wrinkling or creasing before printing. Laser sensor minimize potential damage to the printheads from collisions with raised or jammed textiles.



Jam sensor

Detects textile wrinkling when printhead carriage is scanning the textile and prevent contact with the printhead. Wrinkle and jam sensors minimize printhead troubles.



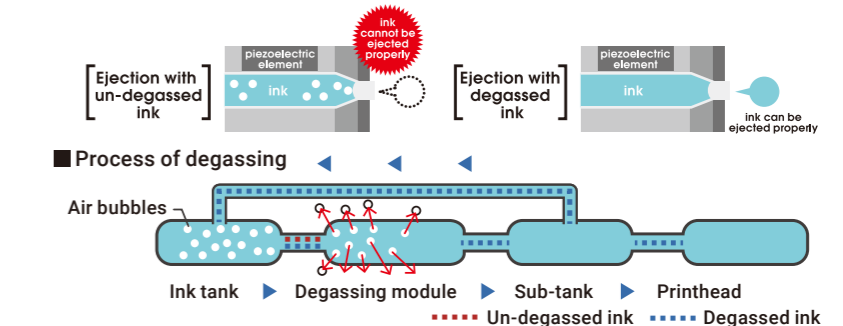
Large-sized ink tank ensures cost-effective print operation

The bulk ink supply (10 Kg) delivers cost-effective printing and enables long-hour printing.



Degassing module and ink circulation mechanism maintain optimum ink conditions

Air bubbles generated in the ink can lead to missing nozzles because such bubbles act as cushion that decrease ink ejection power. To assure stable ink-jetting, "Tiger-1800B MkIII" has a degassing module that removes bubbles and constantly circulate ink.

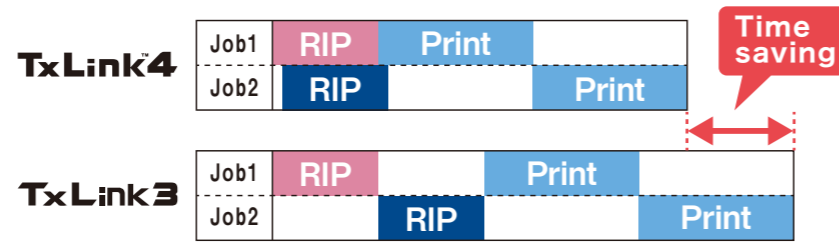


- ◆ Parallel RIP function for higher production efficiency
- ◆ The 16-bit rendering for impressive gradation expression

TxLink4™

Parallel RIP function

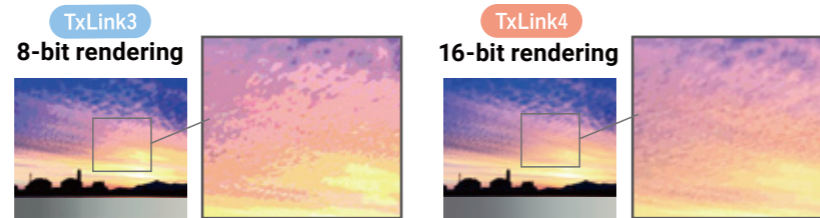
Parallel RIP processing can be performed in parallel for multiple pieces of print data. A maximum of eight jobs can be handled.



16-bit rendering

Rendering expanded from 8-bit to 16-bit enables more beautiful gradation expression.*

*8-bit rendering is used depending on the file format or color space.



Specifications

Item	Tiger-1800B MKIII Transfer sublimation model	
Printhead	On-demand piezo head	
Printhead No. / Layout	8 printheads (4 x 2 staggered layout)	
Drop size	Min. 5pl Max.13pl	
Print resolution	600 dpi, 1,200 dpi	
Max. printable width	1,850 mm	
Max. media width	1,900 mm	
Media core diameter	3 in	
Roll outer diameter	Feeding	Φ1,000 mm (39 in) or less
	Winding	Φ500 mm (19 in) or less
Roll weight	Feeding	1,000 kg (2,204 lb) or less
	Winding	500 kg (1,102 lb) or less
Ink	Type/Color	Dye Sublimation : MLSb510 (B/M/Y/K) ECOPASSPORT Certified Ink
	Capacity	10 kg (22 lb) ink tank
Interface	Ethernet 10GB-T / USB2.0 / Removable disk	
Operation	Touch panel method with the MPC (Mimaki Print Controller), a specialized software installed into the built-in PC.	
Applied RIP software (Option)	TxLink4 Standard	
Certifications	CE marking(EMC, Machinery directive), RoHS, REACH, UL775	
Power (*)	Main unit	3Φ-5L-380VAC ±10%, 50/60Hz ±1Hz, 30A
	Drying/winding unit	3Φ-5L-380VAC ±10%, 50/60Hz ±1Hz, 30A
Operational environment	Temperature	20~25 degC / 68-77 degF
	Humidity	35~65% RH (No condensing)
	Dust	0.15mg / m3 or less
Powr consumption	Main unit	15kVA or less
	Drying/winding unit	15kVA or less
	Feeding unit	Incl. in the main unit
Outer dimensions (LxMxH)	Main unit	5,550 x 2,050 x 2,250 mm (217 x 81 x 89 in) approx.
	Footprint of Feeding unit + Main unit + Drying/winding unit installed :	5,750 x 6,240 x 2,250 mm(226 x 246 x89 in) approx.
Weight	Main unit	4,800 kg (10,582 lb) or less
	Drying/winding unit	1,500 kg (3,307 lb) or less
	Feeding unit	720kg (1,587 lb) or less

*1 : Power for the Main unit includes the Feeding unit.

Supplies

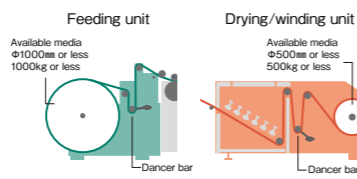
Item	Ink type	Color	Code	Description
Dye sublimation MLSb510 ECO PASSPORT Certified ink		Blue	MLSS1-BLT-BJ	10 kg (22 lb) Ink tank
		Yellow	MLSS1-YT-BJ	
		Magenta	MLSS1-MT-BJ	
		Black	MLSS1-KT-BJ	
Flushing liquid FL03			FL003-Z-BJ	10kg (22 lb) bottle

Options

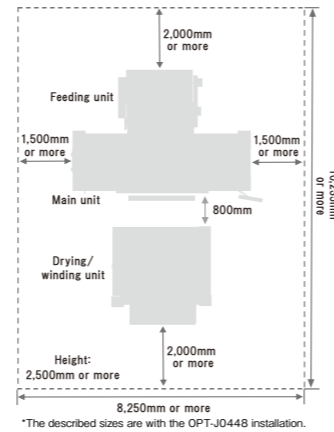
Tiger-1800B MKIII
Transfer sublimation model option

Transfer paper feeding unit & Drying/winding unit (OPT-J0448)

Exclusively designed feeding and drying/winding units for large transfer paper roll:
Dancer bar mechanism controls to stabilize the media feeding & winding.



Installation layout

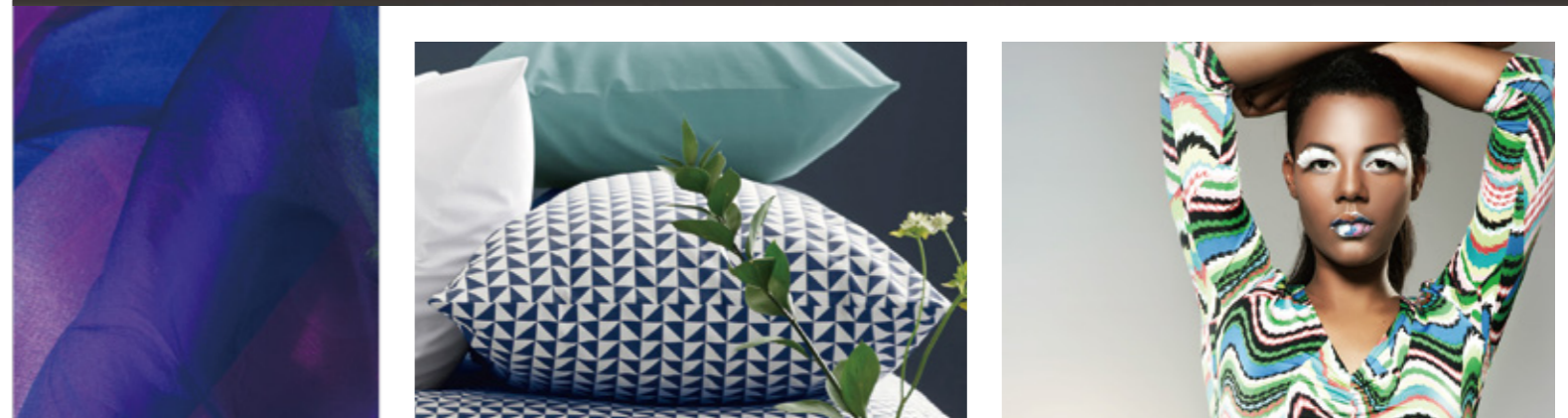


For
TEXTILES &
APPAREL

Belt-Type Transfer sublimation Inkjet Printer High-Speed Model **Mimaki™**

Tiger-1800B MKIII

Transfer sublimation



● Some of samples in this catalog are artificial renderings. ● Specifications, design and dimensions stated in this catalog may be subject to change without notice for technical improvements etc. ● The corporate names and merchandise names written in this catalog are the trademark or registered trademark of the respective corporations. ● Inkjet printers print using extremely fine dots, so colors may vary slightly after replacement of print heads. ● Also note that if using multiple printer units, colors could vary slightly from one unit to other (s) due to slight individual differences. ● The specifications described in this catalog are as of August 2021.

Mimaki MIMAKI ENGINEERING CO., LTD.
2182-3 Shigeno-Otsu, Tomi-city, Nagano 389-0512, Japan
TEL: +81-268-64-2281

Mimaki Global Network

USA	MIMAKI USA, INC.	Europe	MIMAKI EUROPE B.V.
Brazil	MIMAKI BRASIL COMERCIO E IMPORTACAO LTDA	Indonesia	PT. MIMAKI INDONESIA
India	MIMAKI INDIA PRIVATE LIMITED	Australia	MIMAKI AUSTRALIA PTY. LTD.
Taiwan	MIMAKI ENGINEERING (TAIWAN) CO.,LTD.	China	SHANGHAI MIMAKI TRADING CO.,LTD.
Singapore	MIMAKI SINGAPORE PTE. LTD.	Thailand	MIMAKI (THAILAND) CO.,LTD.

Tiger-1800B MkIII

Having highly-stable performance and high print technology, "Tiger-1800B MkIII" is a transfer sublimation inkjet printer realizing high-level print quality and print speed.



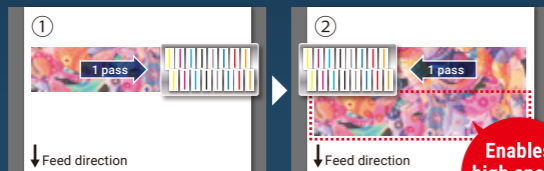
Max print resolution **1200 dpi** Max speed **385 sqm/h** (4,144 sq.ft/h)

» Selectable print mode

Print mode can be selectable in accordance with your job for high-speed print focusing on productivity and high-quality print pursuing beauty.

01. One pass mode

All printheads incorporated in the printer are used in one pass mode, thus allowing for one-time print width equivalent to two staggers.



Enables high-speed printout.

02. Multi pass mode



Enables high-quality printout.

-Rear row stagger of the printheads incorporated in the printer is used for printing.
-Front row stagger prints overlapping on the same place to finish the printing.
-The print speed becomes about half of that in one pass mode.

» Drop mode for optimal drop size to be selected in accordance with the printing data

Depending on ink type and printing mode, there are 4 different droplet sizes. Drop mode can be selected from the two types of high speed and standard modes to match the print data.

High speed (3 drops) mode

Ideal for fine design data such as thin lines and for light colors printing.



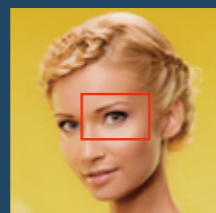
Standard (4 drops) mode

Ideal for printing where density is required such as monochromatic colors.



*Droplet size by MLSb510 Transfer sublimation ink

*Droplet size by MLSb510 Transfer sublimation ink



Drop mode



Combination of different size dots enables smooth color printing with less graininess.

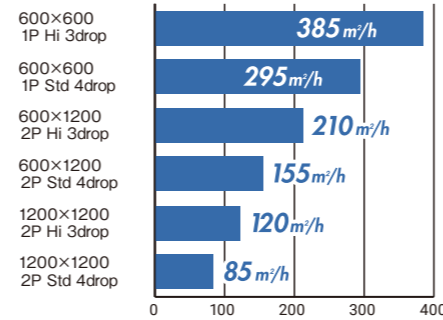
Fixed dot*1



*1 Fixed dot cannot be selected.

» Print speed

Bi-direction print



Condition of print speed:
MAPS: Auto Auto cleaning (Normal) every 30 min. Print width: 1,850 mm

The advanced functions of pursuit of high quality print and ease in operation

NEW! MPC

* MPC: Mimaki Printer Controller

New software of touch screen for easier operation, built-in PC in the main body, which automatically starts and instructs printer settings, operations, and output.



One touch selection



Status is indicated by icon



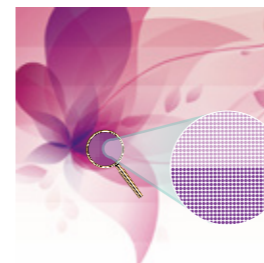
*The 4 colors are indicated for the transfer sublimation model.

Easy check of remaining ink level

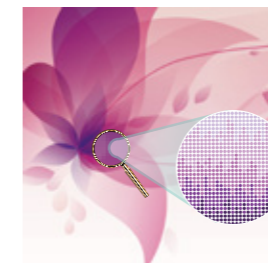
NEW! MAPS4

Banding and uneven color printing are reduced with blurred boundaries similar to graduation printing.

* MAPS4 : Mimaki Advanced Pass System 4



MAPS: OFF



MAPS: ON

NEW! Nozzle Recovery & Scanner for preventing downtime of nozzle clogging

- No need of direct service intervention
- Replaces clogged nozzles by open nozzles
- Makes printing possible even if nozzles are missing
- Increases the uptime

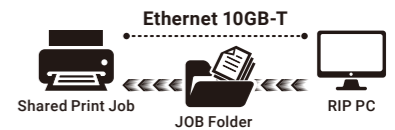
* The Nozzle Recovery is activated only at multi pass mode.



NEW! Ethernet 10GB-T

- For hyper print data transfer

Please note the RIP PC needs to have 10 GB base ethernet controller too.



Reliable and Stable mechanism secures high-speed printing

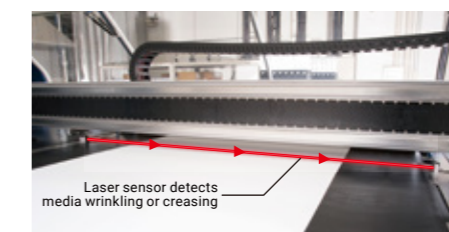
Pressure roller

It is to stick transfer paper to the feeding belt along with applying tension by roller. It is for the stability of print quality without wrinkles etc. of transfer paper.



Wrinkle sensor

Detects media wrinkling or creasing before printing. Laser sensor minimize potential damage to the printheads from collisions with raised or jammed media.



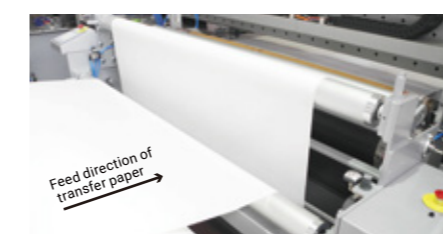
Jam sensor

Detects media wrinkling when printhead carriage is scanning the media and prevent contact with the printhead. Wrinkle and jam sensors minimize printhead troubles.



Tension bar

An air cylinder mounted to the tension bar fitted in the feeding unit and the drying/winding unit can adjust the tension of feeding transfer paper.



Transfer paper feeding unit & Drying/winding unit (Option)

Exclusively designed feeding and drying/winding units for large paper roll:
A long time consecutive operation is available with the below specifications of mountable media:
-Up to 1,000mm of dia. & 1,000kg of length & weight for feeding unit
-Up to 500mm of dia. & 500kg of length & weight for drying/winding unit

Feeding unit



Drying/winding unit

